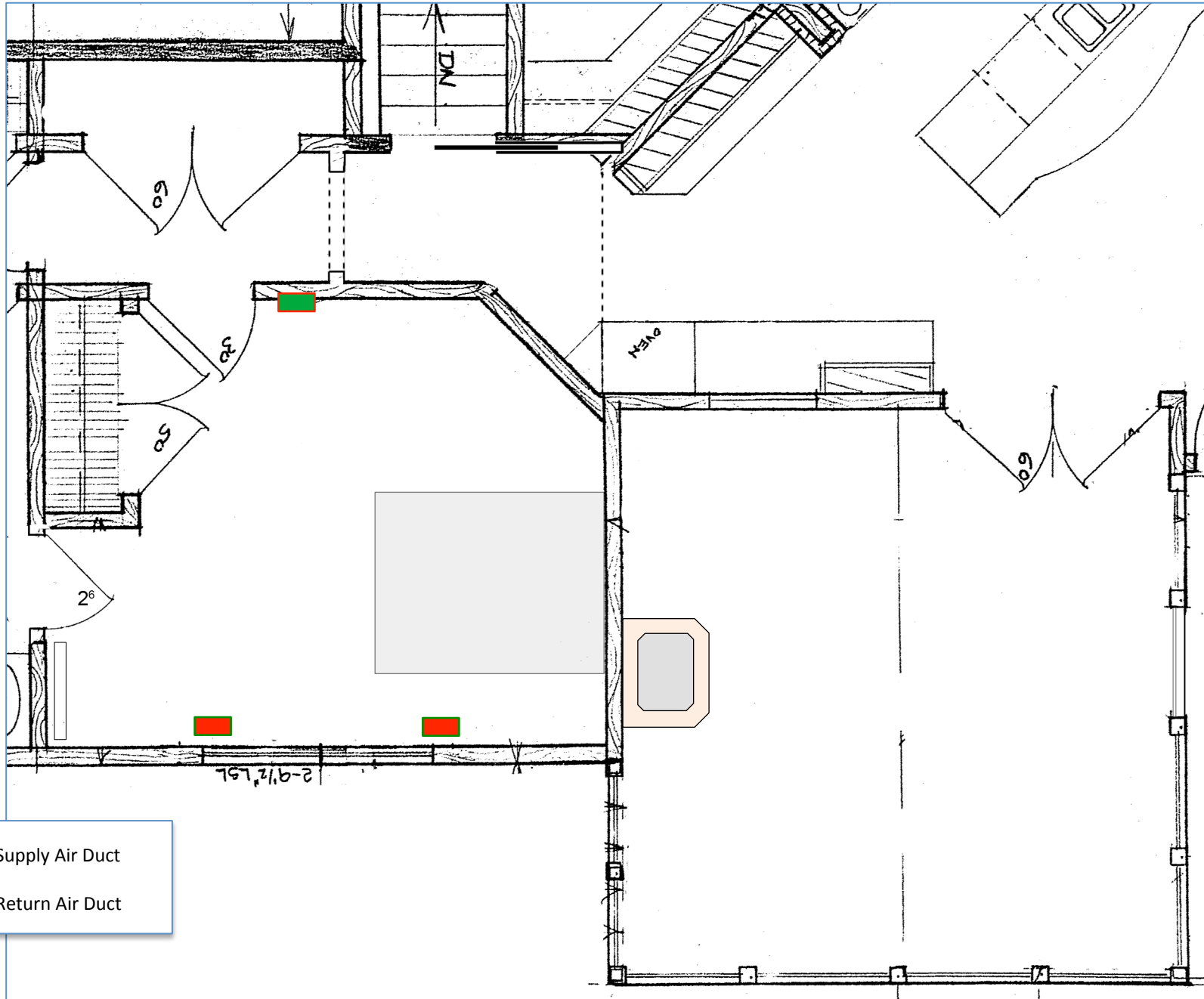
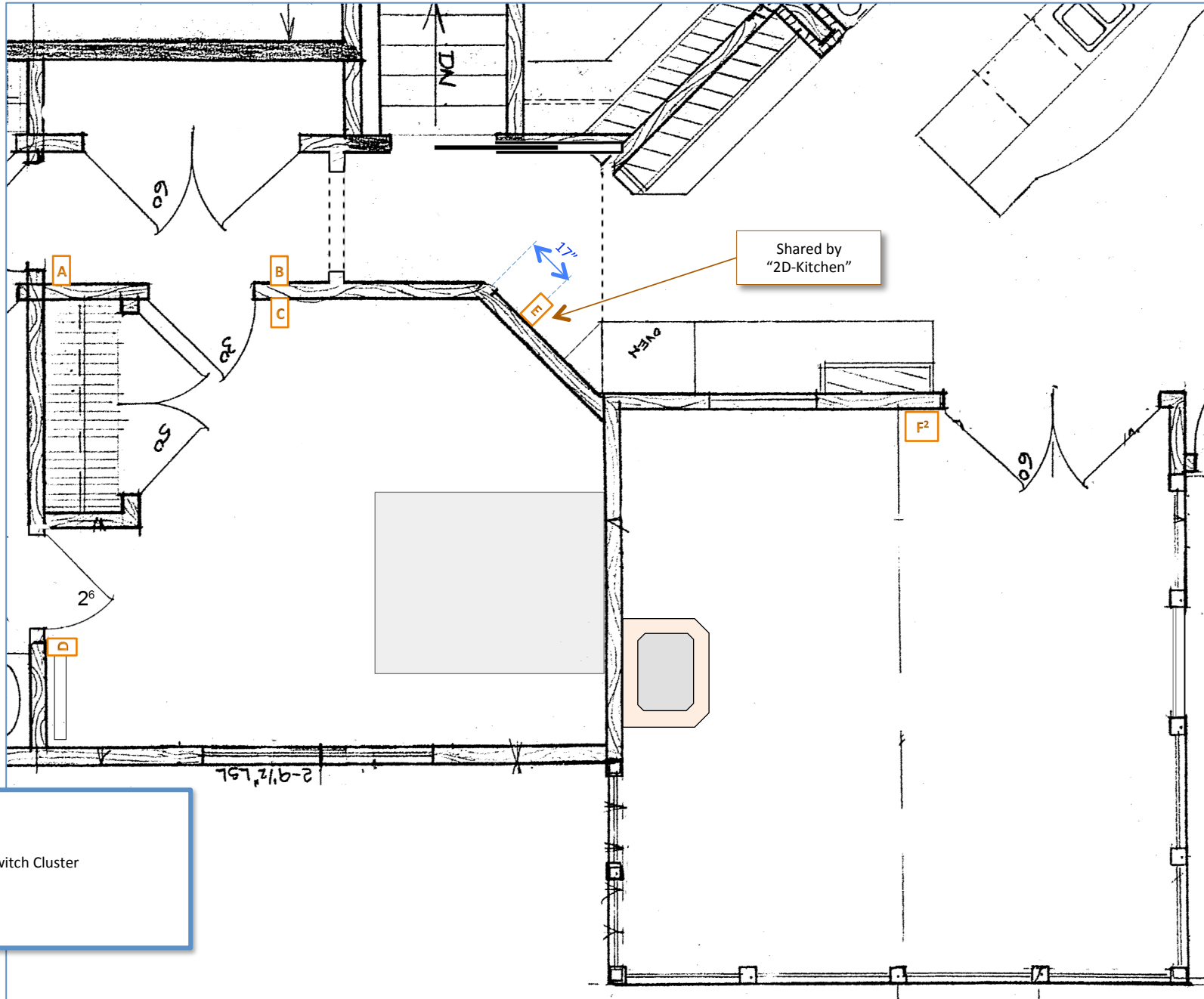


Floor Plan

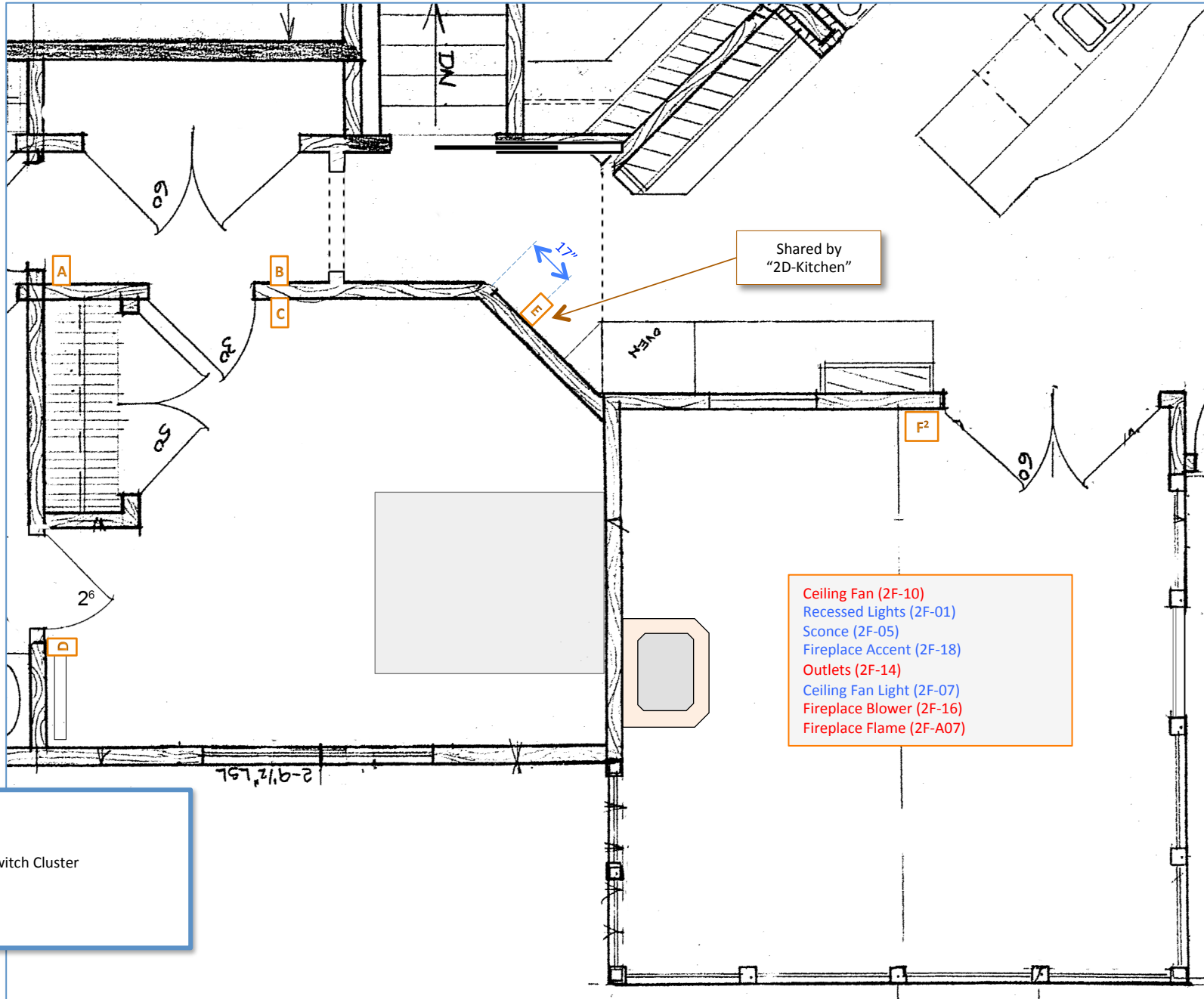


HVAC Duct Locations

- = Supply Air Duct
- = Return Air Duct



X = Switch Cluster



Lighting Controls

X = Switch Cluster

- Ceiling Fan (2F-10)
- Recessed Lights (2F-01)
- Sconce (2F-05)
- Fireplace Accent (2F-18)
- Outlets (2F-14)
- Ceiling Fan Light (2F-07)
- Fireplace Blower (2F-16)
- Fireplace Flame (2F-A07)

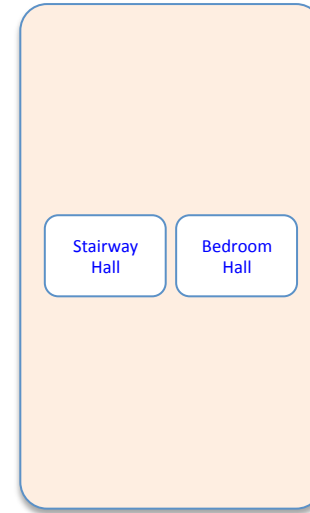
**Keypad Location 2F-A**  
BR 3 Hall, East End



BR 3 Hall: 1 Light Control

Cables  
1 – Orange/2

**Keypad Location 2F-B**  
BR 3 Hall, West End



BR 3 Hall: 1 Light Control  
Upper Stairs: 1 Light Control

Cables  
1 – Orange/2

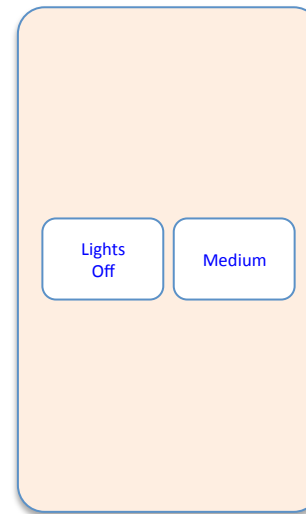
**Keypad Location 2F-C**  
BR 3, Right of Hall Door



BR 3: 2 Light Controls  
BR 3: 1 Outlet Control

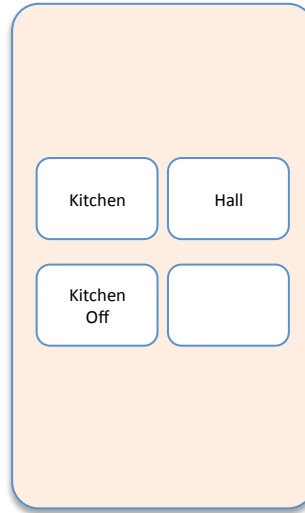
Cables  
1 – Orange/2  
1 – White/7  
1 – Keypad 2G-A

**Keypad Location 2F-D**  
BR 3, Left of Bath Door



Cables  
1 – Orange/2

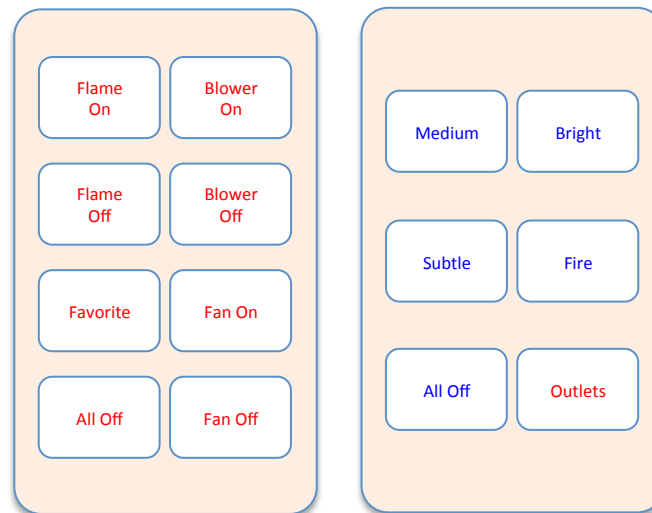
Keypad Location 2F-E  
Top Lower Stairs, NW Wall



Cables  
1 – Orange/1

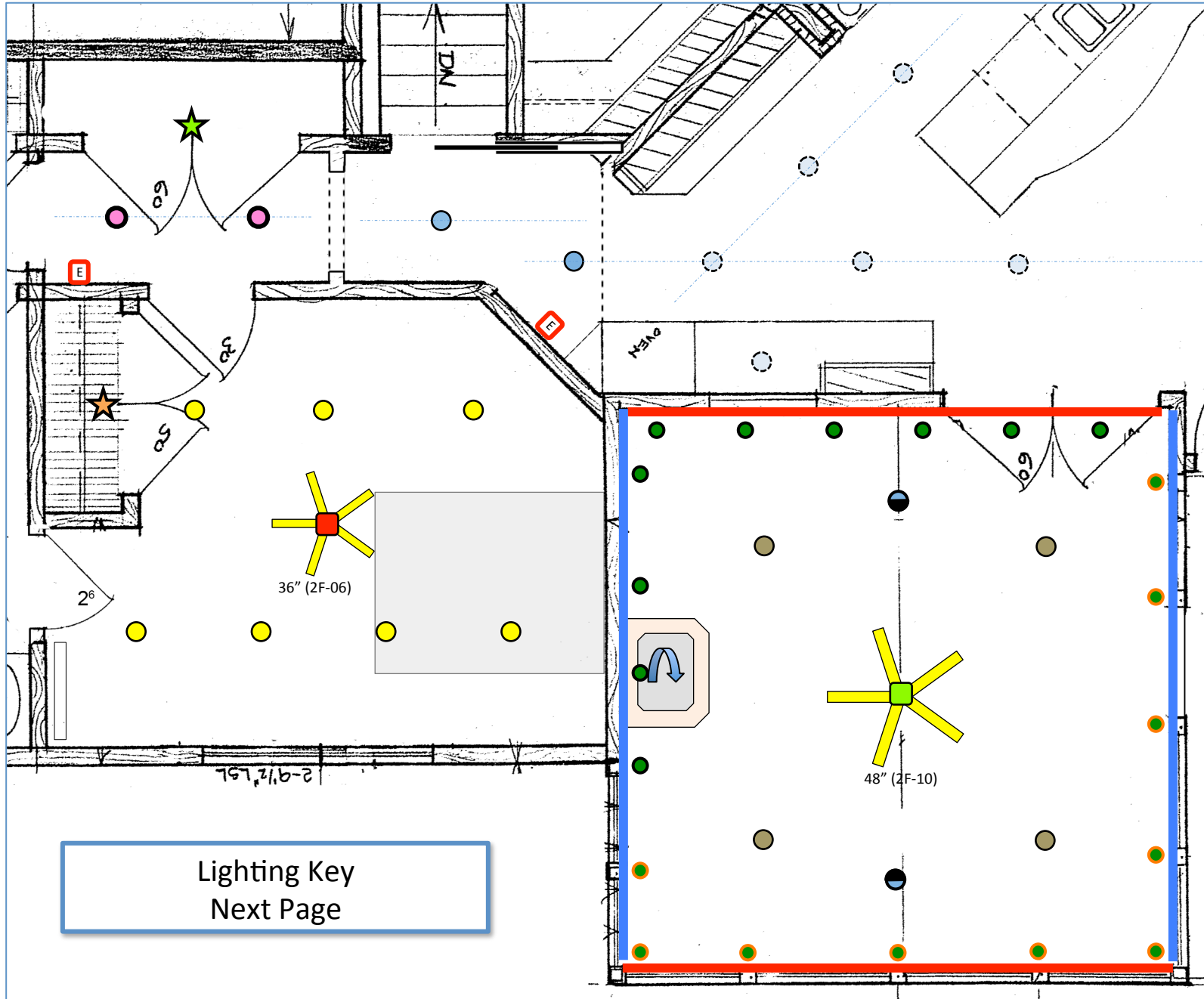
---

Keypad Location 2F-F (L&R)  
Screen Porch Door





- Ceiling Fan (2F-10)
- Recessed Lights (2F-01)
- Sconce (2F-05)
- Fireplace Accent (2F-18)
- Outlets (2F-14)
- Ceiling Fan Light (2F-07)
- Fireplace Blower (2F-16)
- Fireplace Flame (2F-A07)


Cables  
1 – Green  
2 – White/7





Lighting 1


 = 6" LED Recessed (2F-02)


 = 6" LED Recessed (2F-03)

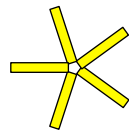
 = 5" Inc. Recessed (2F-04)


 = Standby Light


 = Closet Lighting (2F-08)

 = Closet Lighting (2F-09)


 = Fan Light (2F-06)


 = Ceiling Fan (2F-06)


 = 6" Inc. Sloped Recessed (2F-01)


 = 6" Inc. Gable Flood (2F-18)


 = 3" LED Puck Perimeter Puck Lights (2F-T19a)

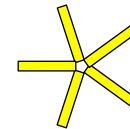
 = 3" LED Puck Perimeter Puck Lights (2F-T19b)

 = LV LED Uplights - Gable Walls (24v LED Tape) ( 2F-T20b)

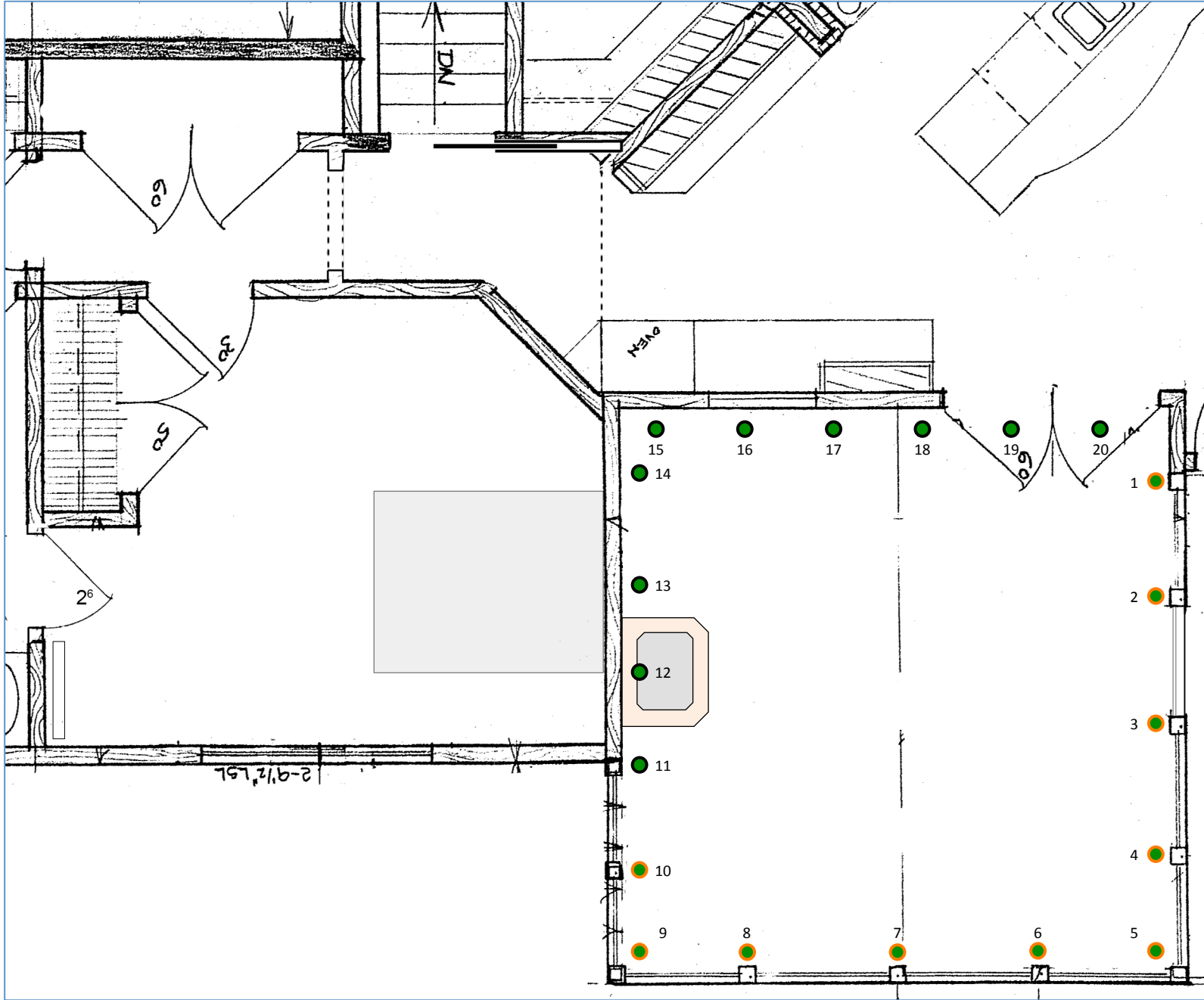
 = LV LED Uplights – Ceilings (24v LED Tape) ( 2F-T20a)

 = Fan Light (2F-07)

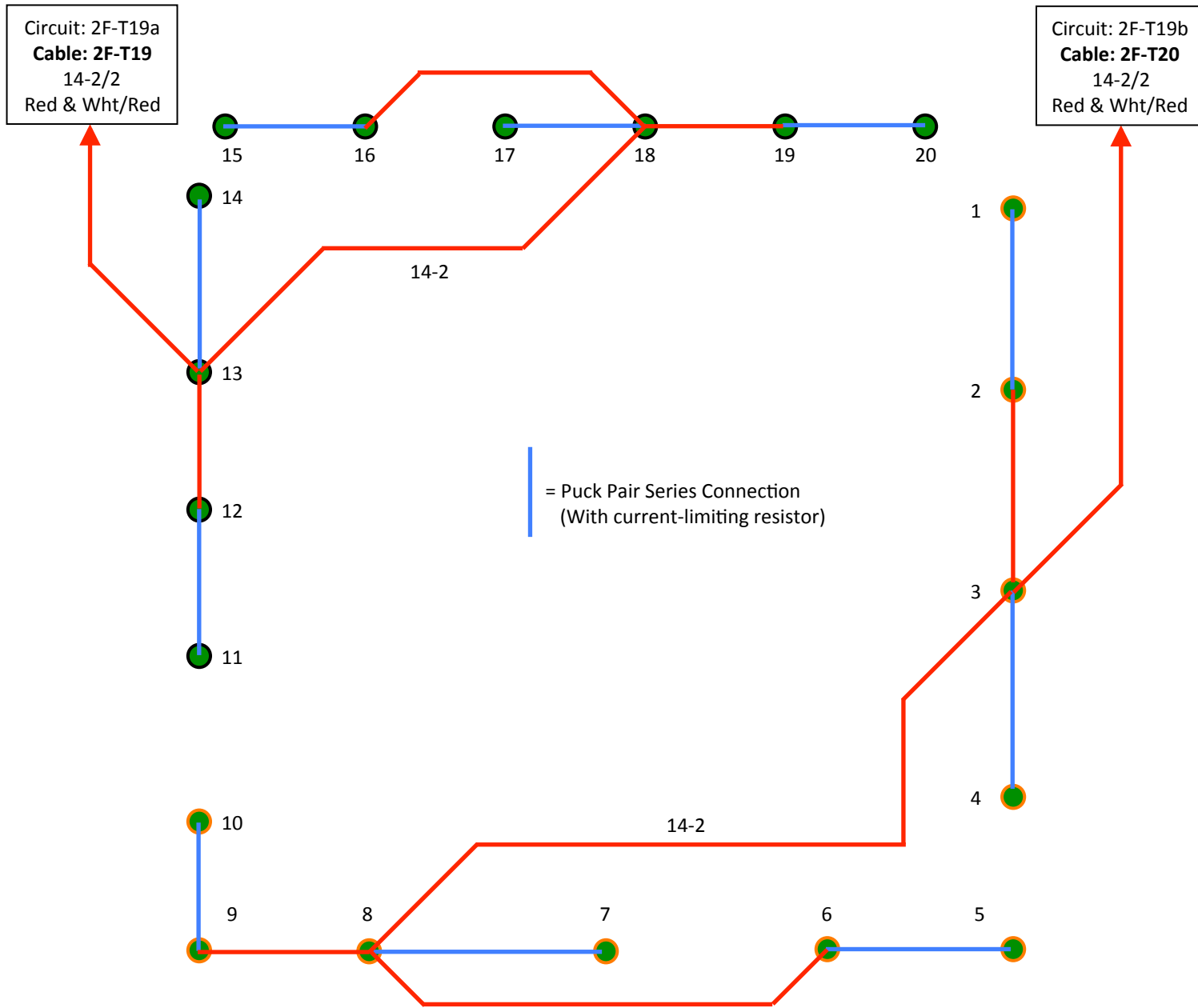
 = Firebox Blower (2F-16)

 = Ceiling Fan (2F-10)

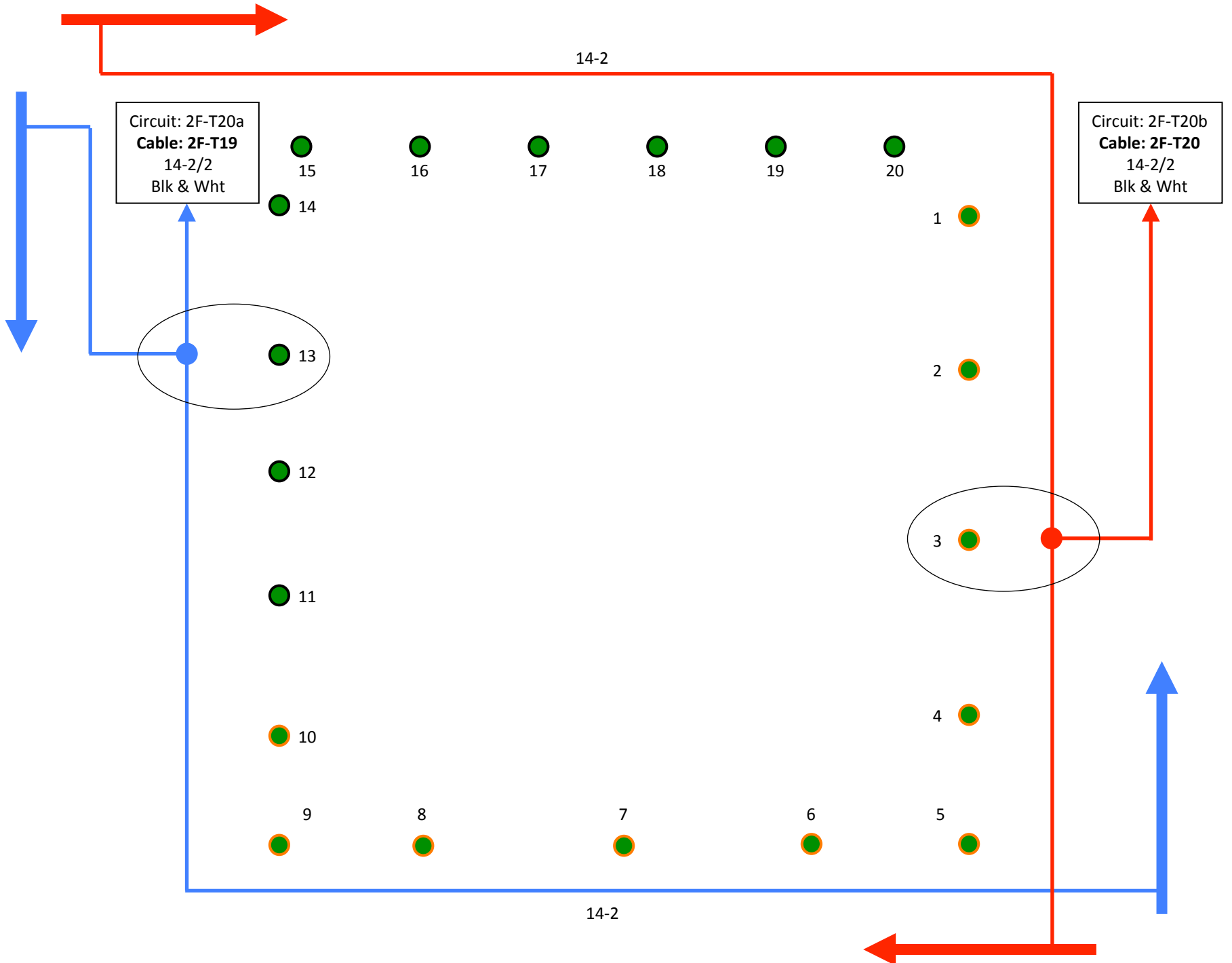




Porch Lighting Detail 1



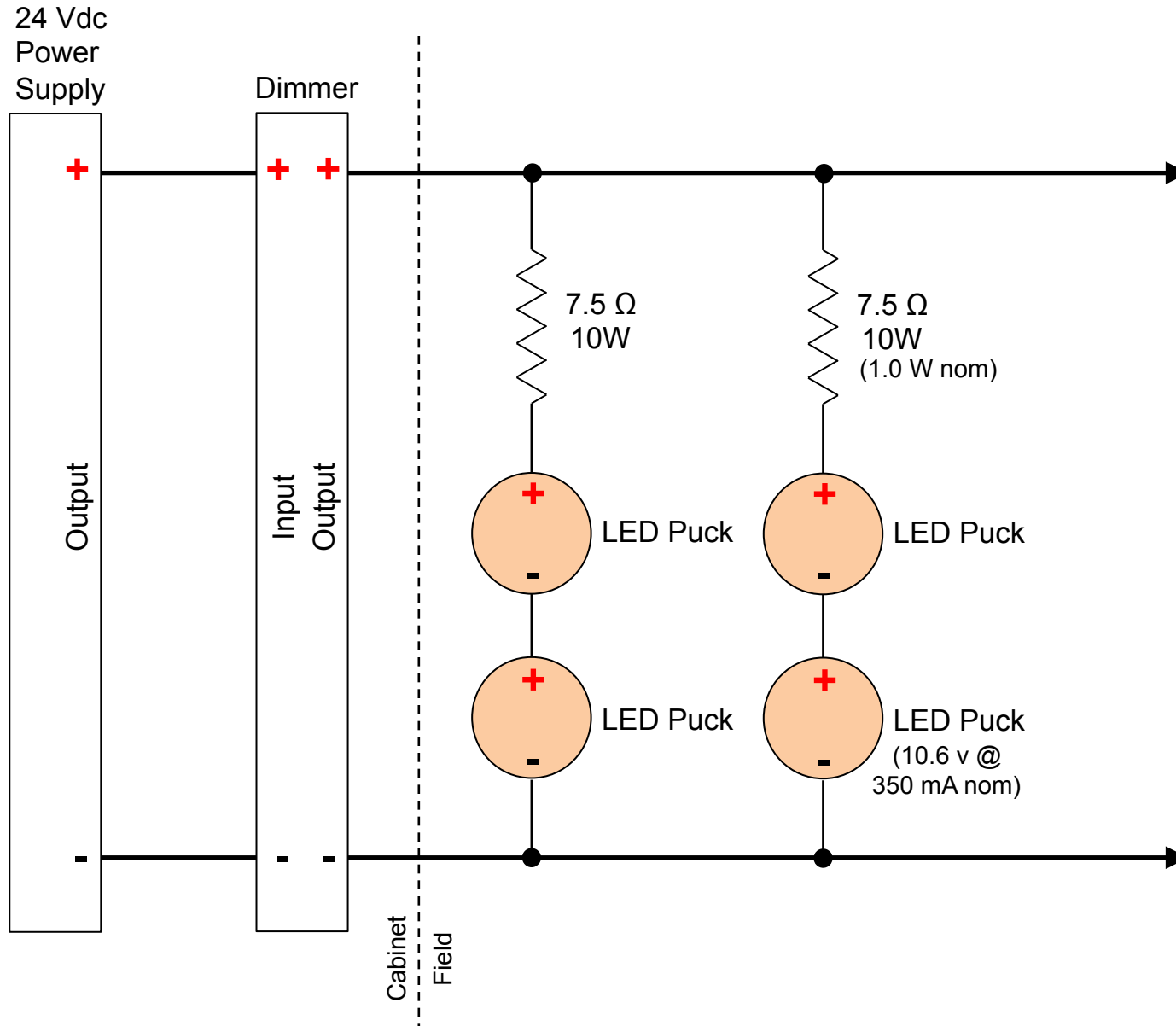
Porch Lighting Detail 2

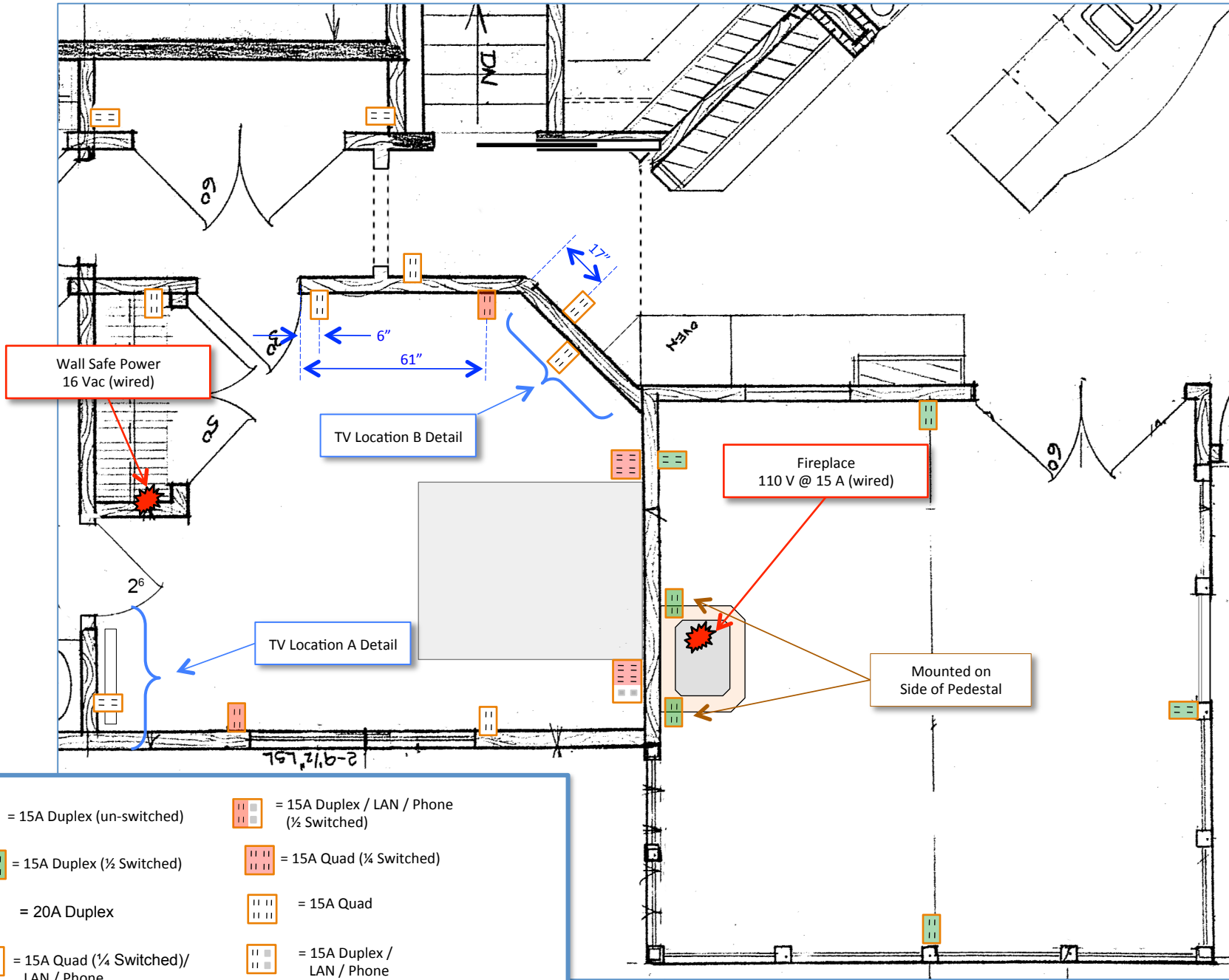


Porch Lighting Detail 3

# 24 Vdc LED Puck Series Wiring

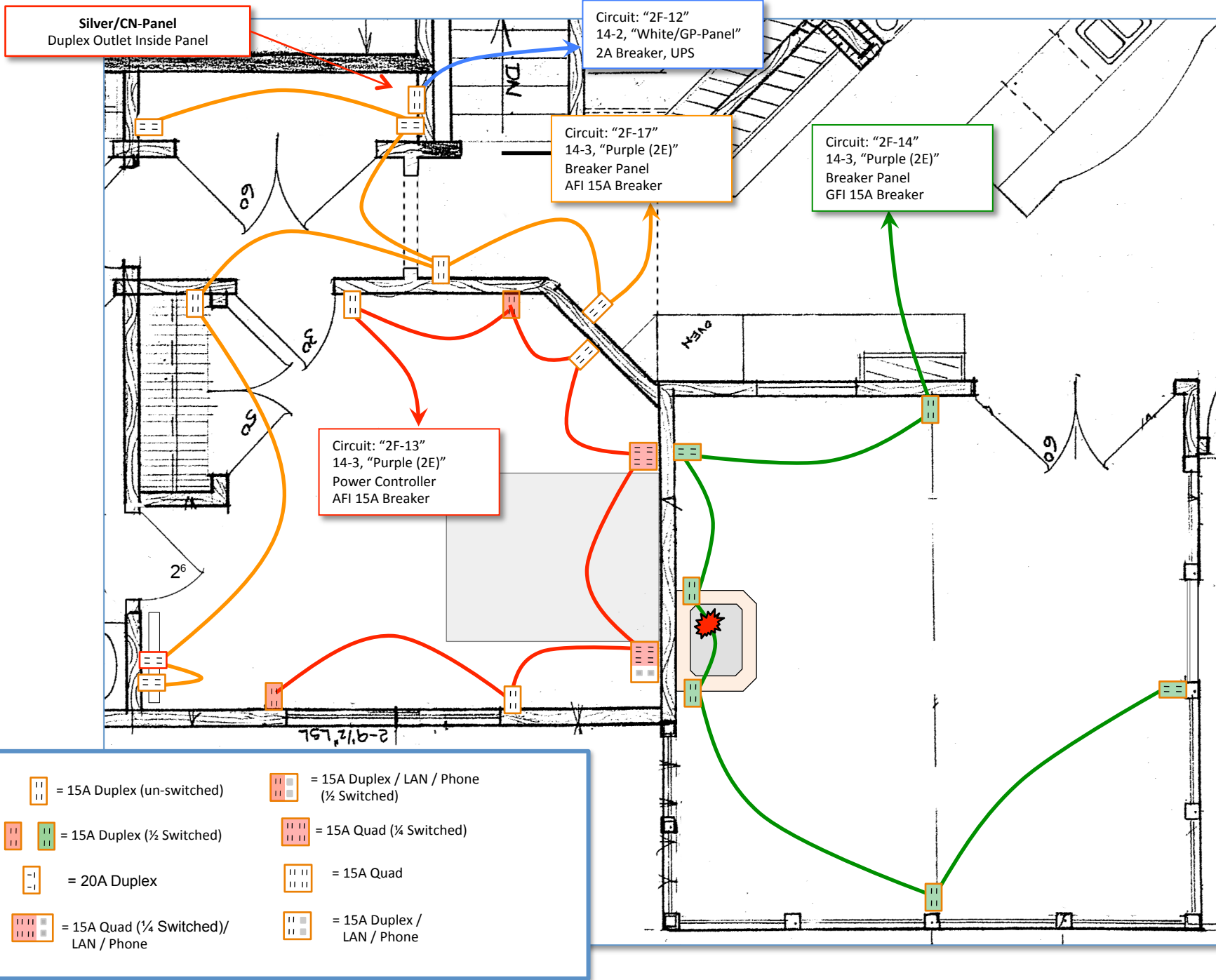
(Screen Porch: 5 Puck Pairs In Each of 2 Circuits)



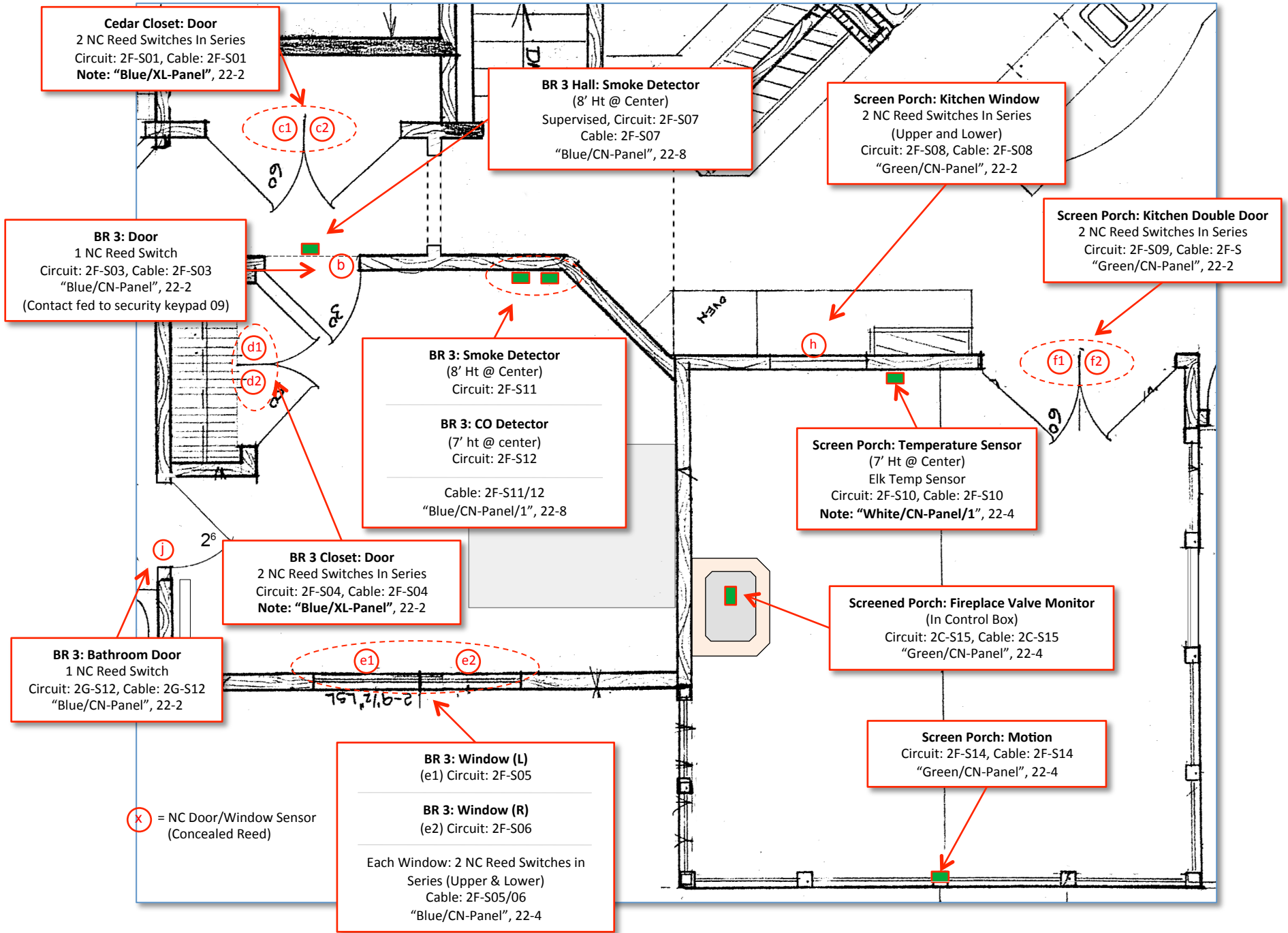


Power

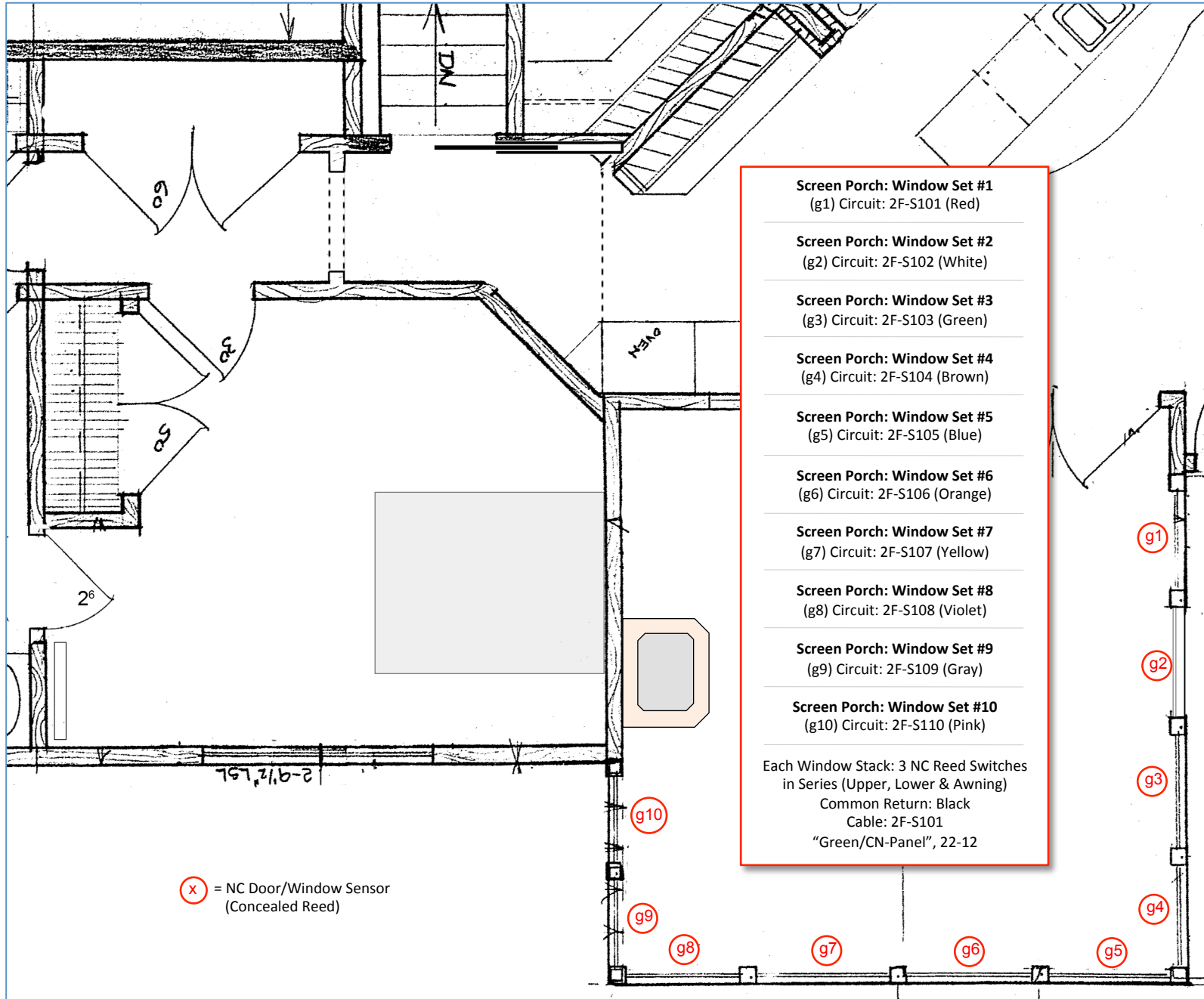
	= 15A Duplex (un-switched)		= 15A Duplex / LAN / Phone (1/2 Switched)
	= 15A Duplex (1/2 Switched)		= 15A Quad (1/4 Switched)
	= 20A Duplex		= 15A Quad
	= 15A Quad (1/4 Switched) / LAN / Phone		= 15A Duplex / LAN / Phone



Power Wiring

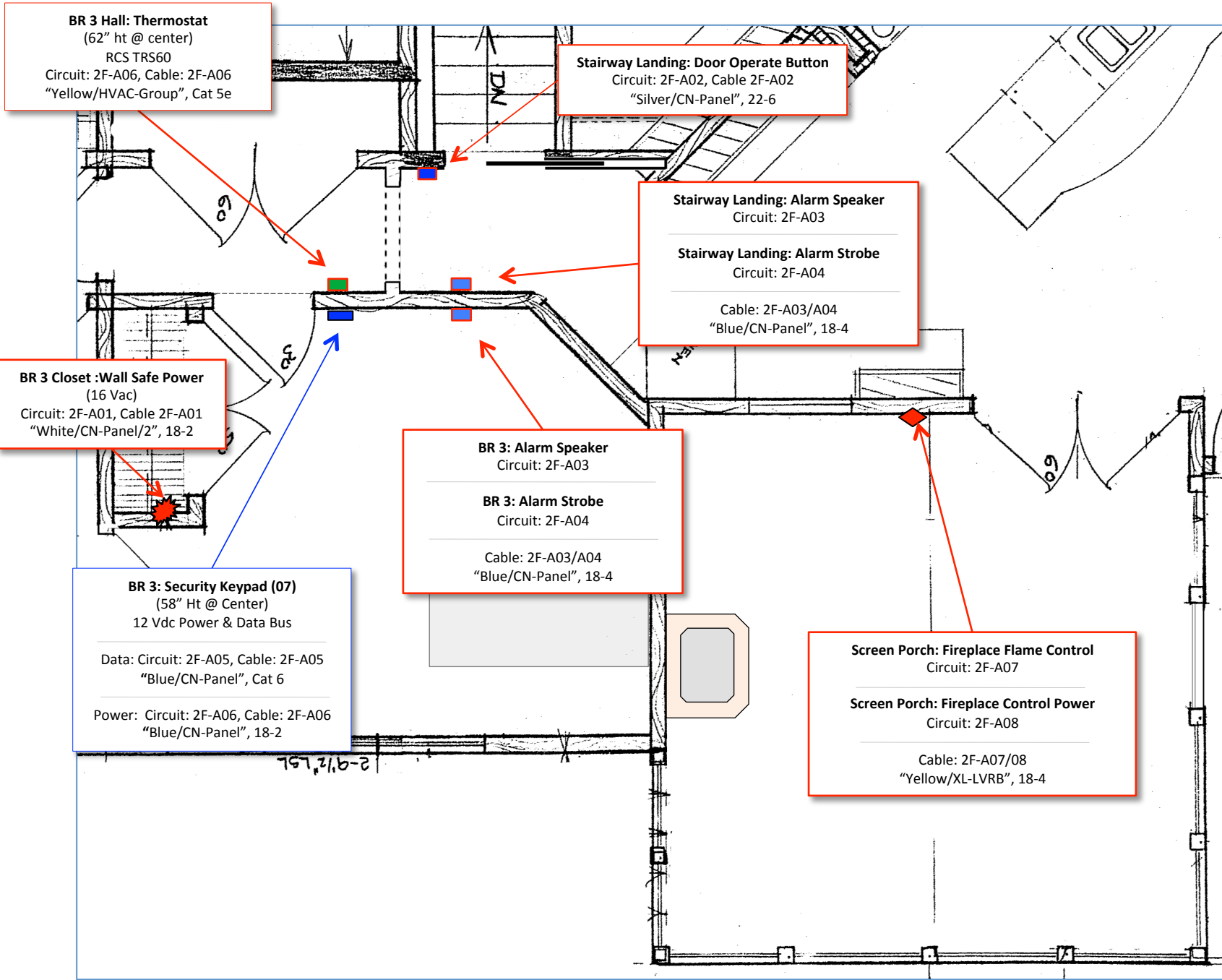


Sensors 1



Sensors 2





**BR 3 Hall: Thermostat**  
 (62" ht @ center)  
 RCS TRS60  
 Circuit: 2F-A06, Cable: 2F-A06  
 "Yellow/HVAC-Group", Cat 5e

**Stairway Landing: Door Operate Button**  
 Circuit: 2F-A02, Cable 2F-A02  
 "Silver/CN-Panel", 22-6

**Stairway Landing: Alarm Speaker**  
 Circuit: 2F-A03

---

**Stairway Landing: Alarm Strobe**  
 Circuit: 2F-A04

---

Cable: 2F-A03/A04  
 "Blue/CN-Panel", 18-4

**BR 3 Closet :Wall Safe Power**  
 (16 Vac)  
 Circuit: 2F-A01, Cable 2F-A01  
 "White/CN-Panel/2", 18-2

**BR 3: Alarm Speaker**  
 Circuit: 2F-A03

---

**BR 3: Alarm Strobe**  
 Circuit: 2F-A04

---

Cable: 2F-A03/A04  
 "Blue/CN-Panel", 18-4

**BR 3: Security Keypad (07)**  
 (58" Ht @ Center)  
 12 Vdc Power & Data Bus

---

Data: Circuit: 2F-A05, Cable: 2F-A05  
 "Blue/CN-Panel", Cat 6

---

Power: Circuit: 2F-A06, Cable: 2F-A06  
 "Blue/CN-Panel", 18-2

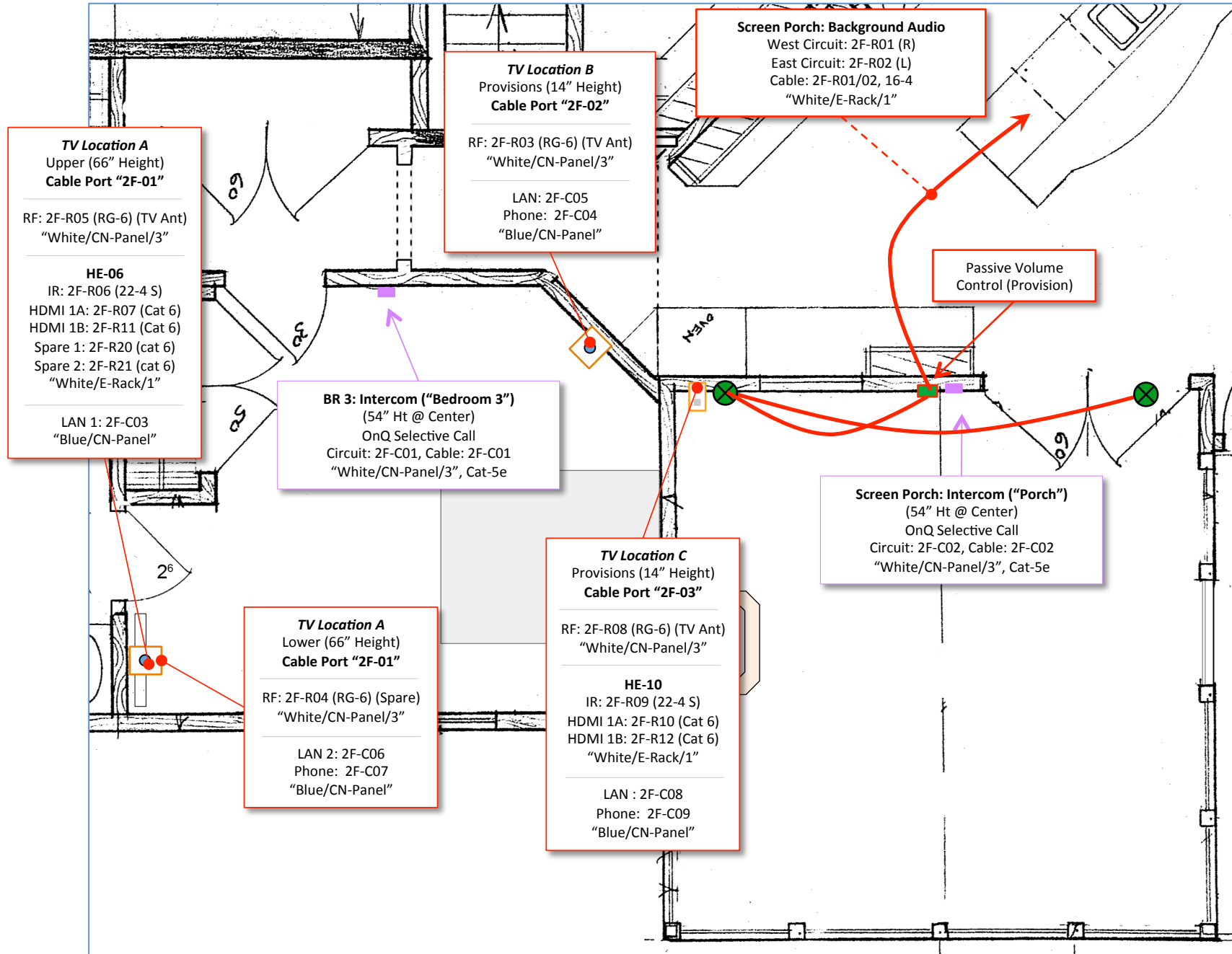
**Screen Porch: Fireplace Flame Control**  
 Circuit: 2F-A07

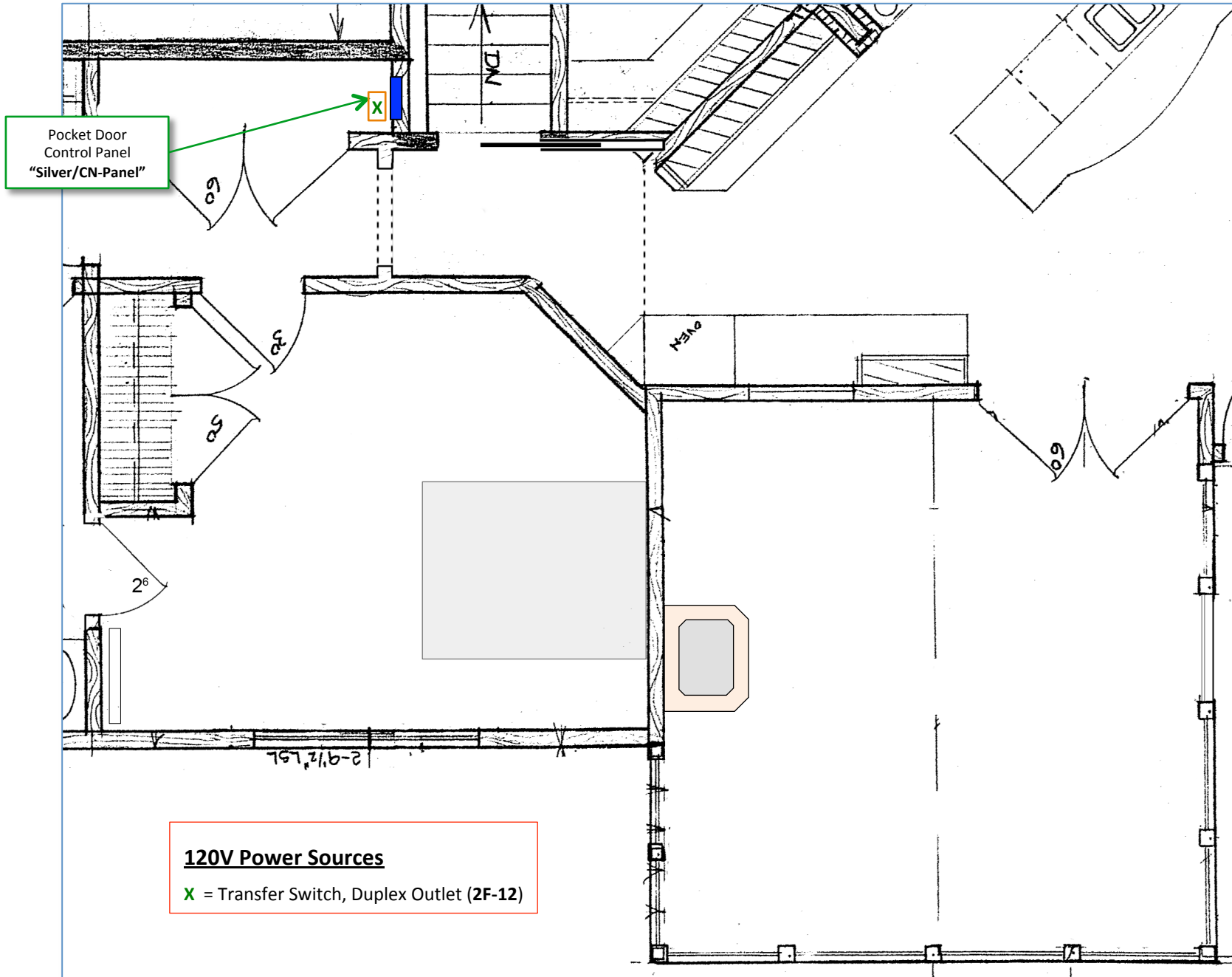
---

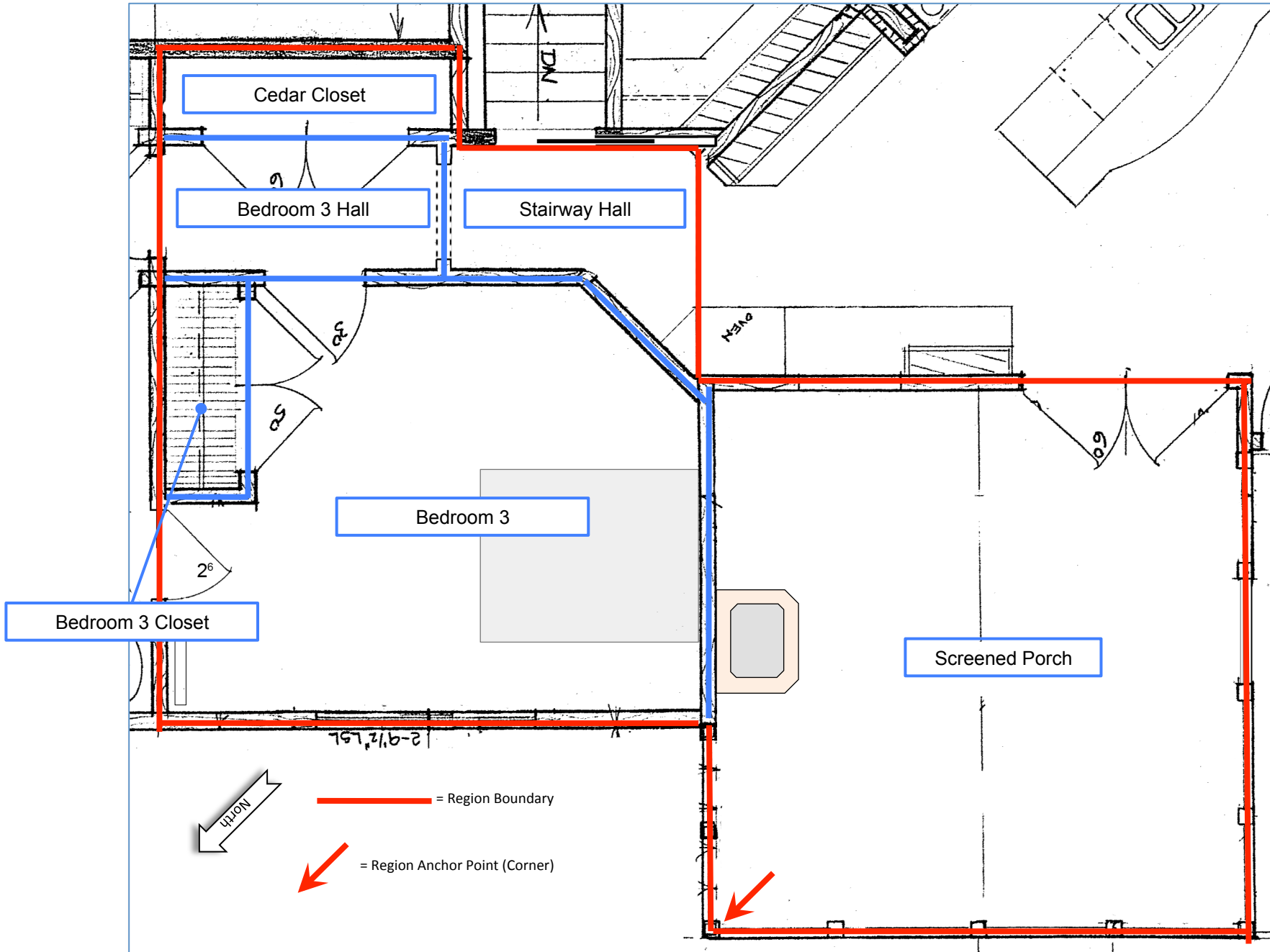
**Screen Porch: Fireplace Control Power**  
 Circuit: 2F-A08

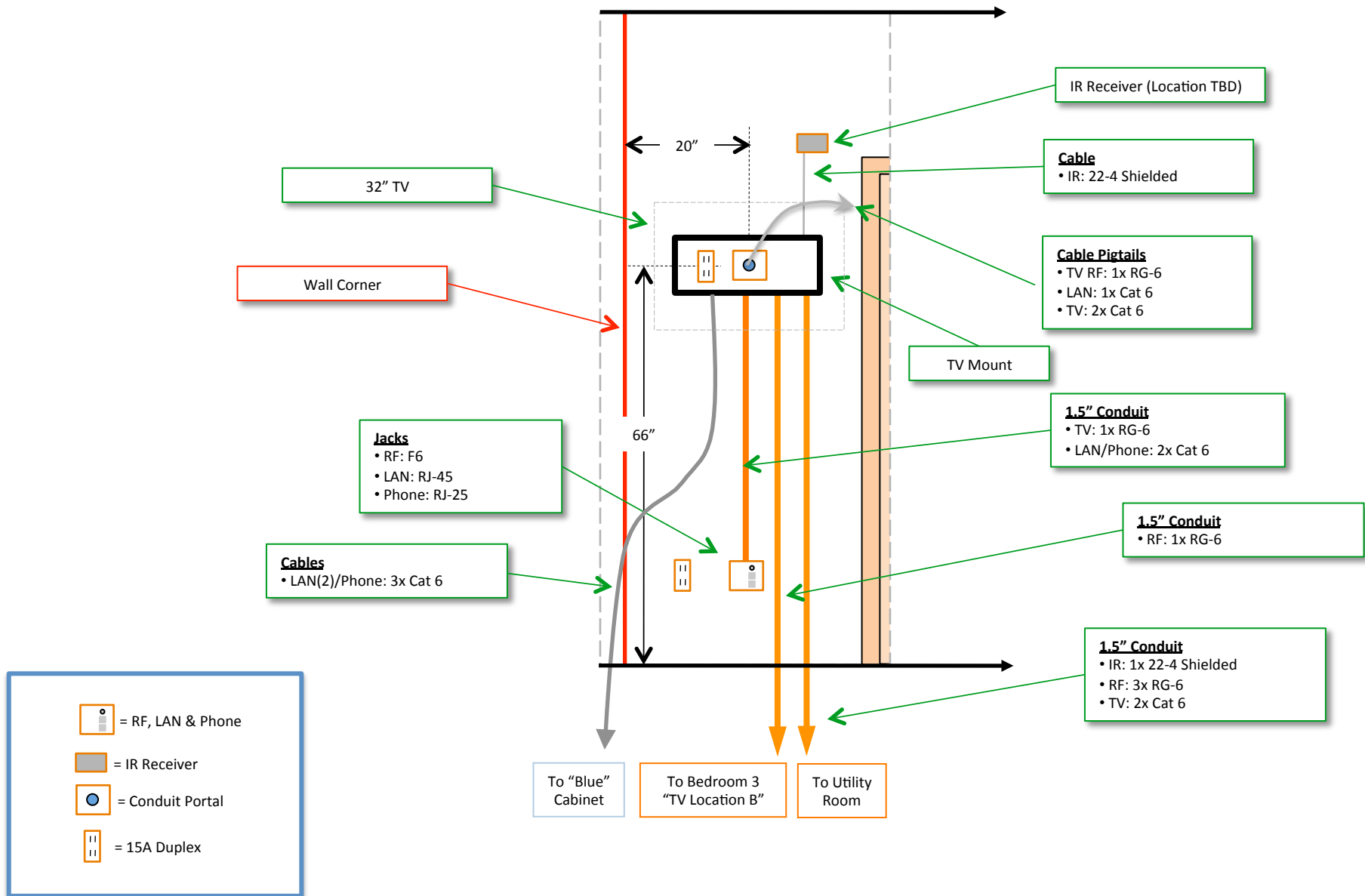
---

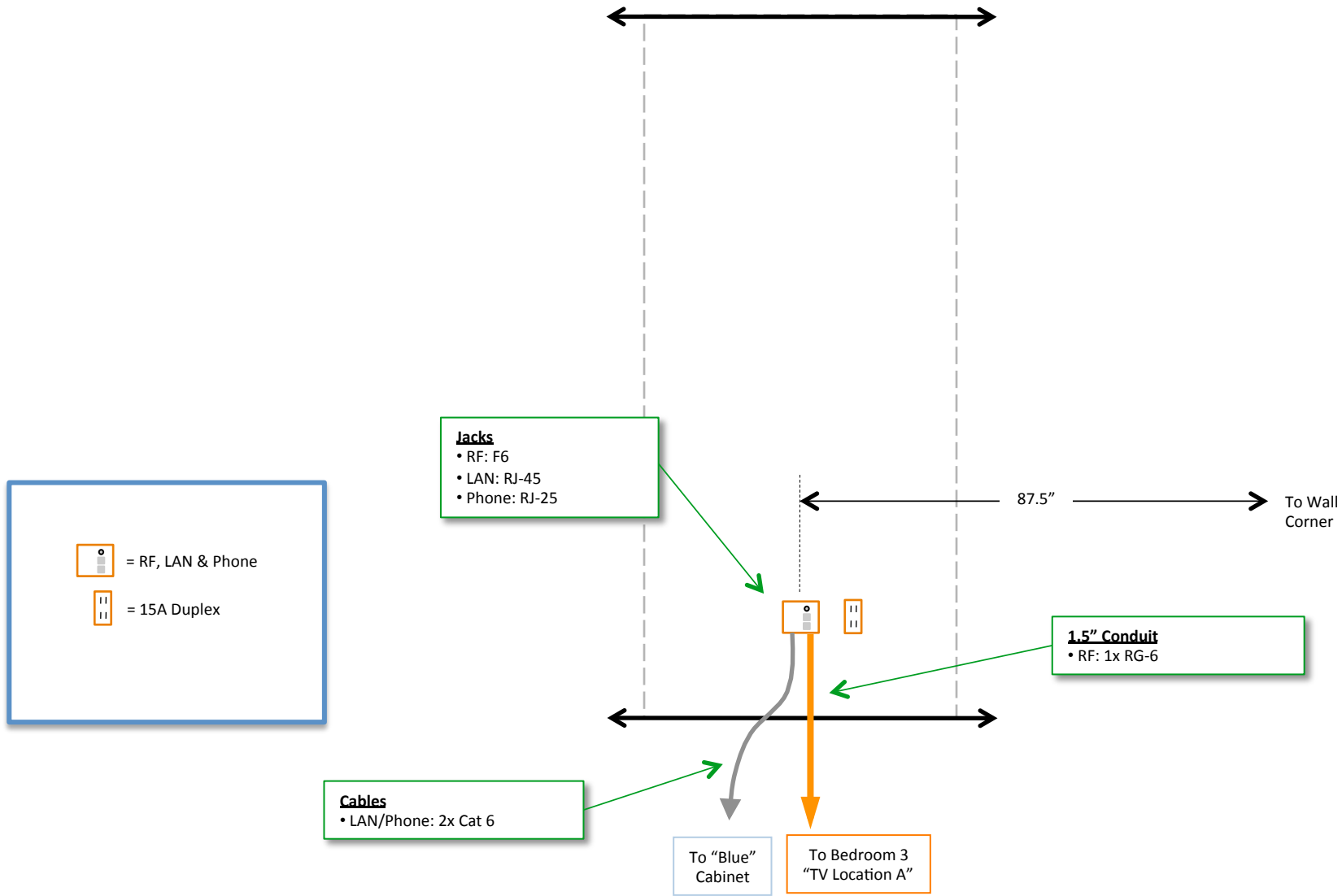
Cable: 2F-A07/08  
 "Yellow/XL-LVRB", 18-4











TV Location B Detail